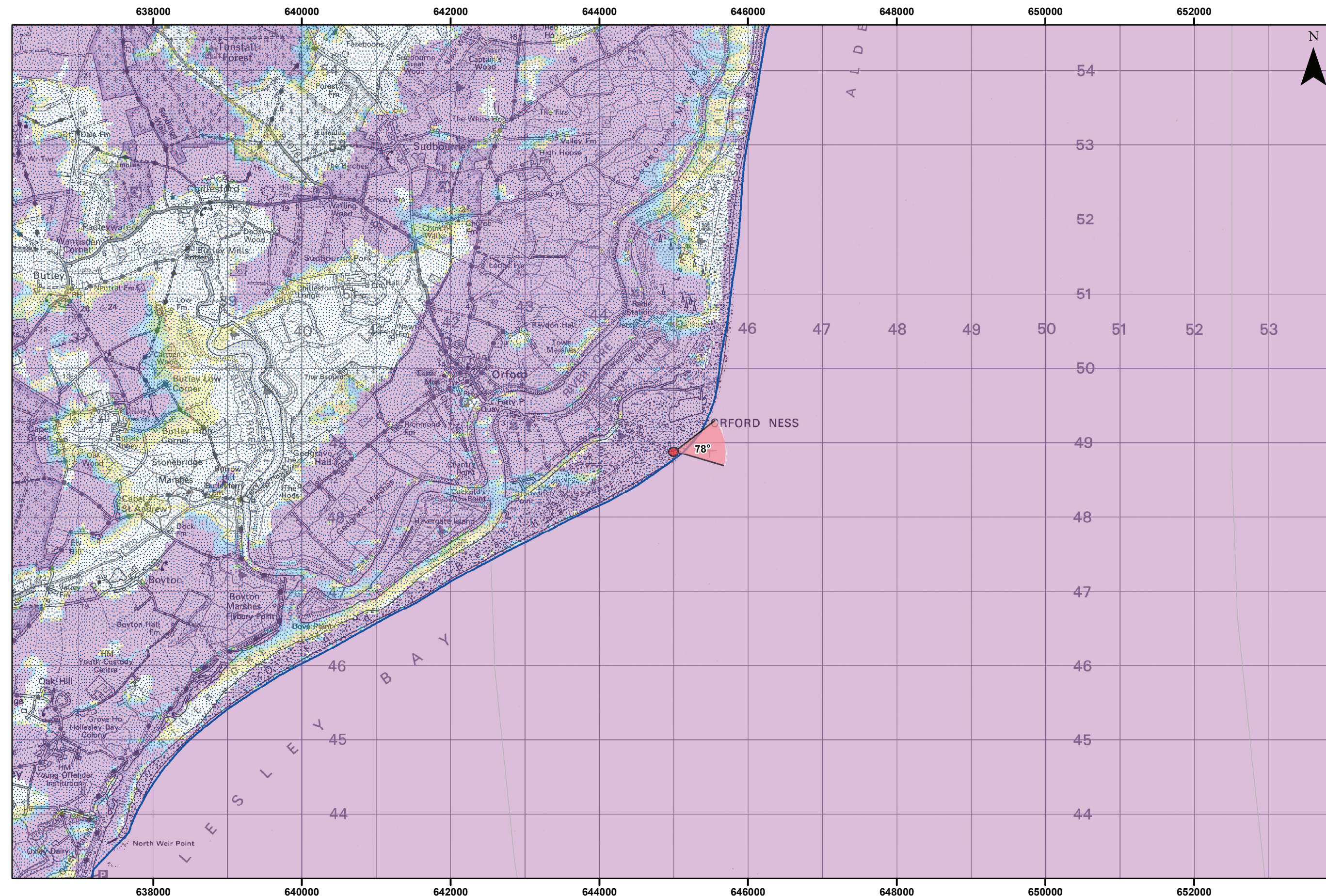


Viewpoint Location Plan - 90 Degree View
Scale: 1:350,000



Viewpoint Location Plan - 53.5 Degree View
Scale: 1:50,000

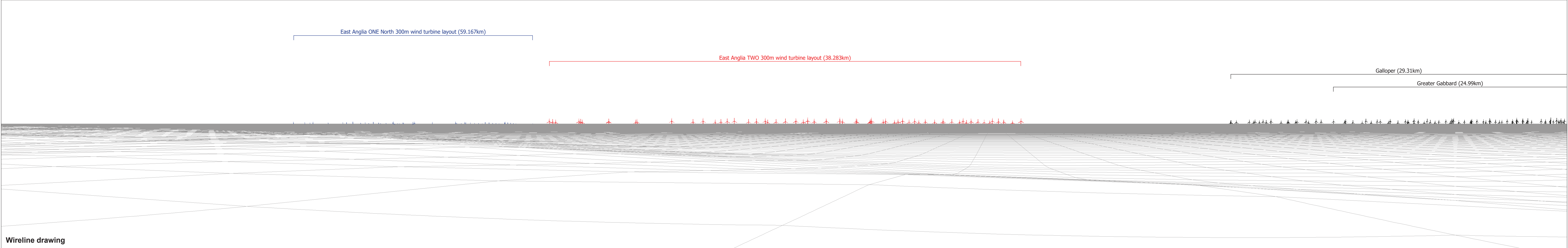


- Legend**
- Site Boundary
 - Proposed Cable Corridor
 - East Anglia TWO 300m Wind Turbine Layout
 - Indicative Accommodation Platform
 - Indicative Offshore Substation Platform (OSS)
 - ▲ Indicative Operational Meteorological Mast (OMM)
 - 10km Radii
 - 50km SLVIA Study Area
 - County Boundary
 - District Boundary
 - Suffolk Coast & Heaths AONB
- Cumulative Wind Energy Development:**
- Cumulative Turbine Locations
 - Active/In Operation
- Blade Tip ZTV**
- No. of Blade Tips Theoretically Visible**
- 1 - 10
 - 11 - 20
 - 21 - 30
 - 31 - 40
 - 41 - 50
 - 51 - 60
- ▼ 90° Field of View
 - ▼ 53.5° Field of View

Rev	Date	By	Comment	Approved:
3	30/08/2019	LA	Second issue	
2	13/08/2019	LA	Second issue	Prepared: TH
1	14/05/2019	TH	First issue	Checked: SM
				Approved: LT

Source: © Crown copyright and database rights 2018. Ordnance Survey 100031873. The Crown Estate © Crown Copyright (2018).
© Natural England copyright. Contains Ordnance Survey data © Crown copyright and database right 2019.
This map has been produced to the latest known information at the time of issue, and has been produced for your information only.
Please consult with the SPPF Contractors GIS team to ensure the content is still current before using the information contained on this map.
To the fullest extent permitted by law, we accept no responsibility or liability (whether in contract, tort (including negligence) or otherwise) in respect of any errors or omissions in the information contained in the map and shall not be liable for any loss, damage or expense caused by such errors or omissions.
ZTV: Created using QGIS ArcGIS 10.8 software and the following data and parameters:
Blade to height: 300m
CTM Data: 0.5
CTM Resolution: 50m
Observer height: 2m
No surface features, such as buildings or trees, were included in the analysis.
Earth curvature and light refraction has been included in calculations.

East Anglia TWO		
Viewpoint: 18		
Orfordness (lighthouse)		
Drg No	EA2-DWF-ENV-REP-IBR-000920	
Rev	3	Datum: WGS 1984
Date	30/08/19	Projection: Zone 31N
Figure	28.42a	



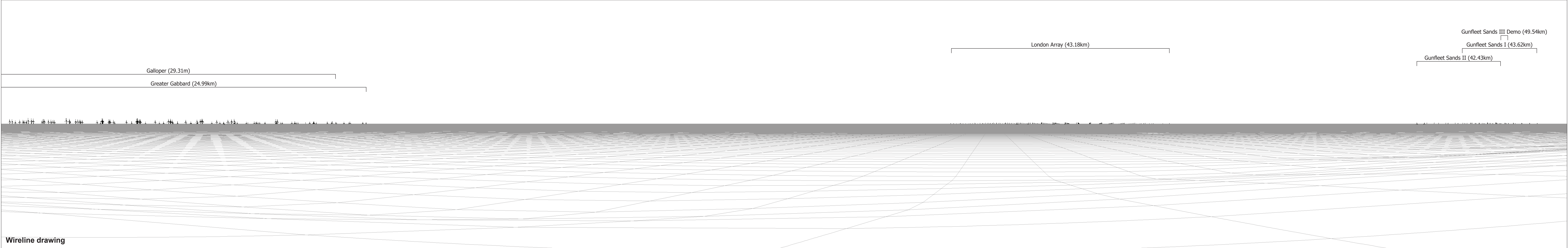
OS reference: 644996 E 248877 N	Horizontal field of view: 90° (cylindrical projection)	Camera: Canon EOS 5D Mark II
Eye level: 5.8 m AOD	Principal distance: 522 mm	Lens: 50mm (Canon EF 50mm f/1.4)
Direction of view: 78°		Camera height: 1.5 m AGL
Nearest turbine: 38.283 km		Date and time: 15/09/17, 11:40

Figure: 28.42b
Viewpoint 18: Orfordness (eastern shore, pagodas)



Baseline photograph

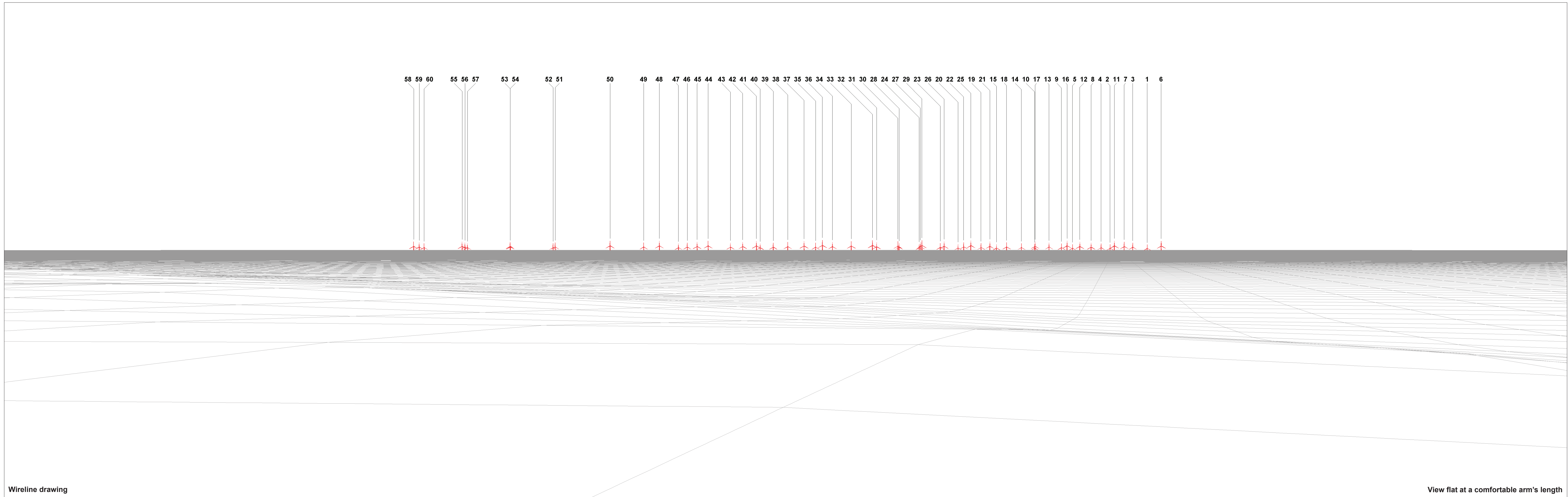
This image provides landscape and visual context only



Wireline drawing

OS reference:	644996 E 248877 N	Horizontal field of view:	90° (cylindrical projection)	Camera:	Canon EOS 5D Mark II
Eye level:	5.8 m AOD	Principal distance	522 mm	Lens:	50mm (Canon EF 50mm f/1.4)
Direction of view:	168°			Camera height:	1.5 m AGL
Nearest turbine:	38.283 km			Date and time:	15/09/17, 11:40

Figure: 28.42c
Viewpoint 18: Orfordness (eastern shore, pagodas)



Wireline drawing

View flat at a comfortable arm's length

OS reference: 644996 E 248877 N
 Eye level: 5.8 m AOD
 Direction of view: 78°
 Nearest turbine: 38.283 km

Horizontal field of view: 53.5° (planar projection)
 Principal distance: 812.5 mm
 Paper size: 841 x 297 mm
 Correct printed image size: 820 x 260 mm

Camera: Canon EOS 5D Mark II
 Lens: 50mm (Canon EF 50mm f/1.4)
 Camera height: 1.5 m AGL
 Date and time: 15/09/17, 11:40

Figure: 28.42d
 Viewpoint 18: Orfordness (eastern shore, pagodas)



Photomontage

View flat at a comfortable arm's length

OS reference: 644996 E 248877 N	Horizontal field of view: 53.5° (planar projection)	Camera: Canon EOS 5D Mark II
Eye level: 5.8 m AOD	Principal distance: 812.5 mm	Lens: 50mm (Canon EF 50mm f/1.4)
Direction of view: 78°	Paper size: 841 x 297 mm	Camera height: 1.5 m AGL
Nearest turbine: 38.283 km	Correct printed image size: 820 x 260 mm	Date and time: 15/09/17, 11:40

Figure: 28.42e
Viewpoint 18: Orfordness (eastern shore, pagodas)